

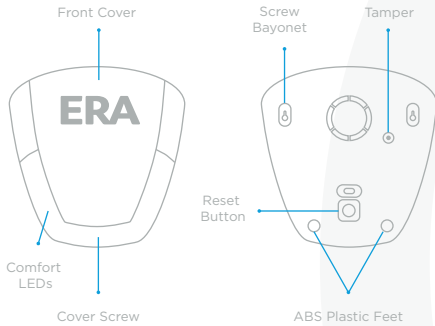
# BATTERY OPERATED WIRELESS SIREN

Model: SALAPWHESSU

## 1. OVERVIEW

The ERA Protect Siren is a battery operated wireless Siren that works with the ERA Protect Alarm System. The Siren is a visual deterrent and has flashing comfort lights to show potential intruders that it is a live siren. When the Alarm is triggered, the Siren will sound at 104dB and the strobe will flash.

## 2. GET TO KNOW YOUR PRODUCT



## 3. INSTALLING AN ACCESSORY

1. Add Device to app.
2. Place the protect tamper sleeve provided over the tamper switch at the back of the siren before installing onto the wall.
3. Place in required position.
4. The Tamper function is disabled for 15 minutes after power up to allow for installation. After 15 minutes the Tamper will become enabled, if the siren is removed from its position after this point the alarm and siren will be triggered.

**Note:** Accessory Tamper Switch is disabled to allow easy installation.

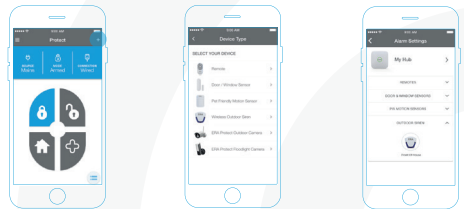
## 4. ADD DEVICES

Once your hub is set up you will be taken to your Protect home screen.

To add a device press the Add (+) button in the top right hand corner and select Add Device.

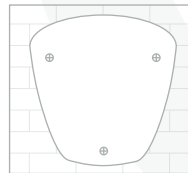
Follow the on-screen instructions to add your device. Repeat as necessary for each device you would like to add. You can add sensors in any order.

Once all devices have been added please check the Protect Hub settings page, accessible via the side bar menu (☰), to ensure all devices are listed and displayed correctly.

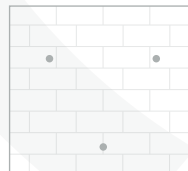


## 5. WIRELESS OUTDOOR SIREN INSTALLATION

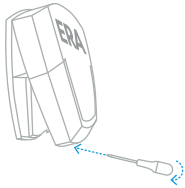
1. Using the drilling template mark up the mounting holes required to be drilled.



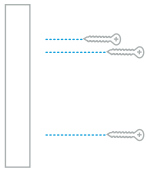
2. Drill the marked holes where you will place your wall plugs.



- Remove the front cover.

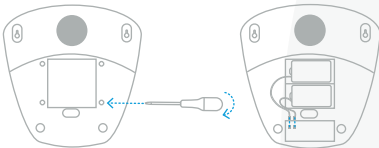


- Take the backplate of the Siren, three screws, wall plugs and a screwdriver to the location.
- Push the wall plugs into the holes and proceed to screw the backplate onto the wall using the screws provided.

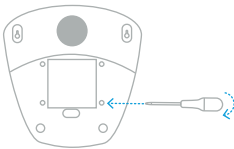


**Note:** Battery is required to be connected before use.

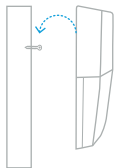
- Remove the battery cover and attach the connectors.



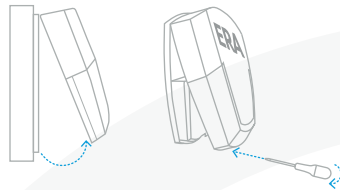
- Place the battery cover onto the backplate and screw it securely.



- Align the front cover to the backplate, hang and slide down.



- Screw the cover screw at the bottom of the Siren lens with a screwdriver to fix the cover to the backplate.



## 7. BATTERY REPLACEMENT

When the panel receives the low battery report from the siren, please change the battery.

- Go into the Alarm Settings and switch Accessory Tamper switch off.
- Go to the location of the Siren and remove the cover screw using a screwdriver.
- Remove the front cover, then proceed to remove the battery cover.
- Unplug the battery connectors and remove from the battery compartment.
- Replace with new recommended batteries and plug them into the Siren.
- Apply the battery cover to the backplate and then replace the front cover back to the backplate.
- Go back into Alarm settings and switch Accessory Tamper Switch back on.

## 9. SPECIFICATION

Alarm Decibel:	104dB
Static Current:	≤1mA
Alarm Current:	≤300mA
Emitting Distance:	200m (in the open air)
Frequency:	868MHZ
Battery:	Battery DC 3.6V (2 x ER34615 Lithium Batteries)
Battery Life:	4 years
IP Rating:	IP55
Housing Material:	ABS Plastic
Size (LxWxH):	250 x 242.7 x 64mm